

IDEXX xChek*: Creating a User-Defined Assay for the IDEXX Milk Pregnancy Test

Creating a user-defined assay is an easy process of two tasks—editing an xChek* file to allow you to create an assay, and then creating the assay within xChek software.

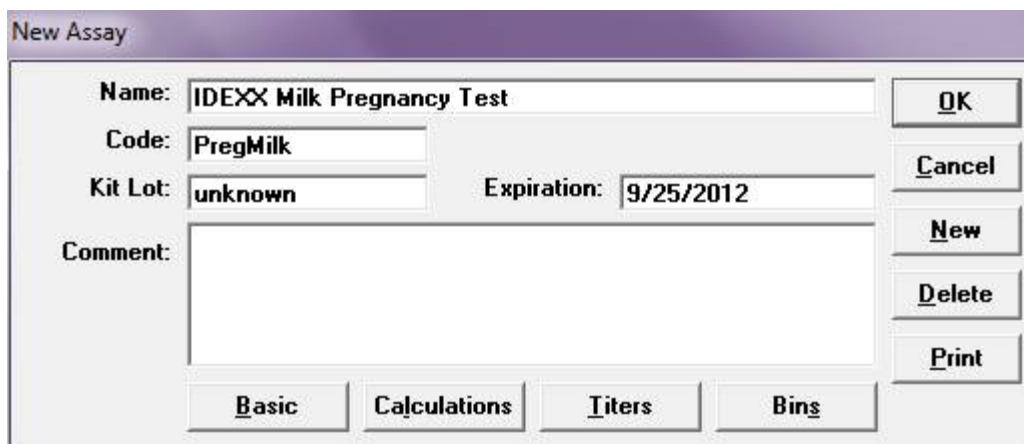
To edit the xChek.ini file:

1. From the task bar, choose **Start> Run**, and type “xchek.ini” into the text box. Click **OK**.
2. After the xChek.ini file opens, locate the line labeled “AllowNewAssays.”
3. If the value for that line is “0,” change it to “1.” If the value is already “1,” do not do anything.
4. Locate the section labeled “[BasicGraphs]” and scroll to the end of the section.
5. Enter “PregMilk=17.”
6. From the menu bar, choose **File> Save**, and then choose **File> Exit**.

To create the assay:

1. From the task bar, choose **Start> Programs> xChek> xChek** to open the xChek program.
2. If prompted to log in, enter your initials and then click **OK**.
3. From the menu bar, choose **Database> Assays> All** to open the Assay dialog box.
4. Click the **New** button, and enter “IDEXX Milk Pregnancy Test” into the Name field, “PregMilk” into the Code field, and “unknown” into the Kit Lot field. Today’s date (mm/dd/yyyy) is automatically entered into the Expiration field.

Note: When you begin testing, update the information in the Kit Lot and Expiration fields with the actual kit lot number and expiration date.



5. Click the **Basic** button, and select or enter the following information for the respective fields:

Case Type: Animal	Samp Filter: 450
Template: Neo Vert	Ref. Filter: 620
Species: Cattle	Dilution: 1
Technology: ELISA	Wells: 1

Note: Refer to the package insert for acceptable reference ranges for reference filter wavelengths.

New Assay

Case Type: Samp Filter:

Template: Ref Filter:

Species: Dilution:

Technology: Wells:

6. Click **OK** to save the settings.
7. Click the **Calculations** button, and select or enter the following information:

Formulas:

“S” Part of Ratio: Sample1-Negative

“P” Part of Ratio: None

“N” Part of Ratio: None

Blocking Factor: None

First Calculation:

Variable: S

Positive Cutoff: 0.250

Suspect Cutoff: 0.100

Comparison: >=

Second Calculation:

Variable: None

Positive Cutoff: 0

Suspect Cutoff: 0

Comparison: None

New Assay

Formulas

“S” Part of Ratio:

“P” Part of Ratio:

“N” Part of Ratio:

Blocking Factor:

First Calculation

Variable:

Positive Cutoff:

Suspect Cutoff:

Comparison:

Second Calculation

Variable:

Positive Cutoff:

Suspect Cutoff:

Comparison:

8. Click **OK** to save these settings, and then click **OK** to save the assay to the database. You can now test for pregnancy status using the xChek Assay Management System.

Please note that results within the range of 0.100 and 0.250 will be reported as suspect with the software but will be considered “Recheck.”

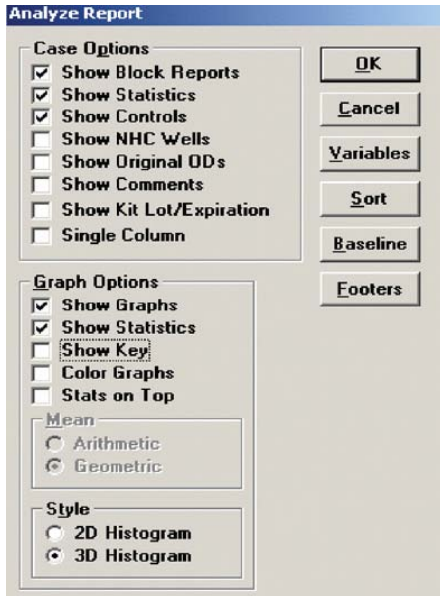
Recheck: Embryonic death is common in early stages of cow pregnancy. PAGs can circulate in cows/heifers for some time after early embryonic death. Cows should be rechecked to confirm pregnancy status. IDEXX encourages producers to work closely with their veterinarians to develop a reproductive management program that is appropriate for their operations.

Note: xChek does not evaluate controls or results for validity when you use a user-defined assay. You must evaluate the results from each assay in accordance with good laboratory practices. To evaluate your assay validity, refer to the “Results” section in the insert provided with the test.

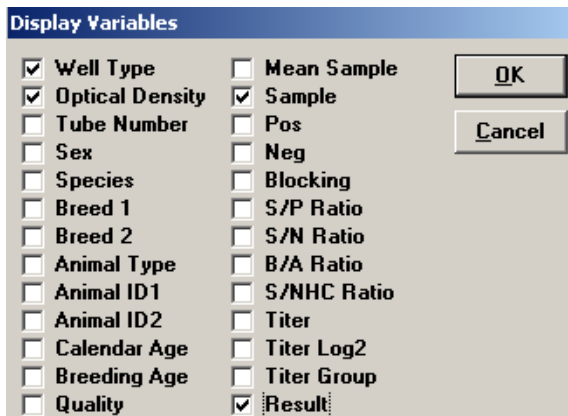
Setting Up Additional Display Variables

Only OD values are displayed in the reporting options for this user-defined assay. To set up additional display variables, follow the directions below.

1. From the xChek menu bar, choose **Reports> Analyze Cases** to open the Filter Criteria for Analyze dialog box.
2. Enter the desired search criteria and click **OK**. The Select Cases for Analyze dialog box opens.
3. Select the desired cases and click **OK**. The Analyze Report dialog box opens.



4. Click the **Variables** button to open the Display Variables dialog box.
5. Select the desired options and click **OK**. Click **OK** again to save the settings.



For more information, call IDEXX Technical Service at 1-800-548-9997, contact your local area manager or visit us on the Web at idexx.com.